

EAST ELEVATION (5)
1/8"=1'-0"

PARTIAL EAST ELEVATION (4)
SEE ALTERNATES 1/8"=1'-0"

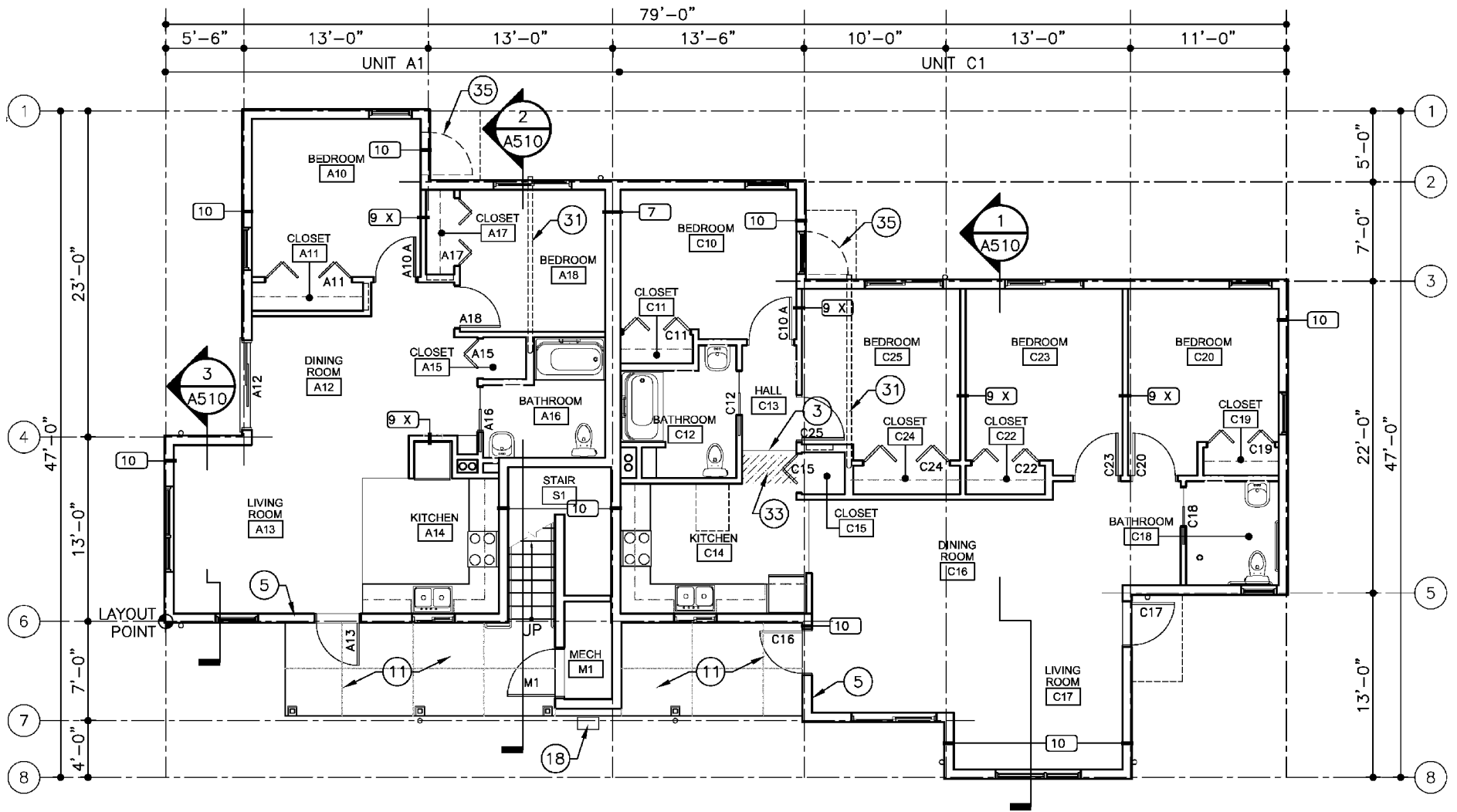
NORTH ELEVATION (2)
1/8"=1'-0"



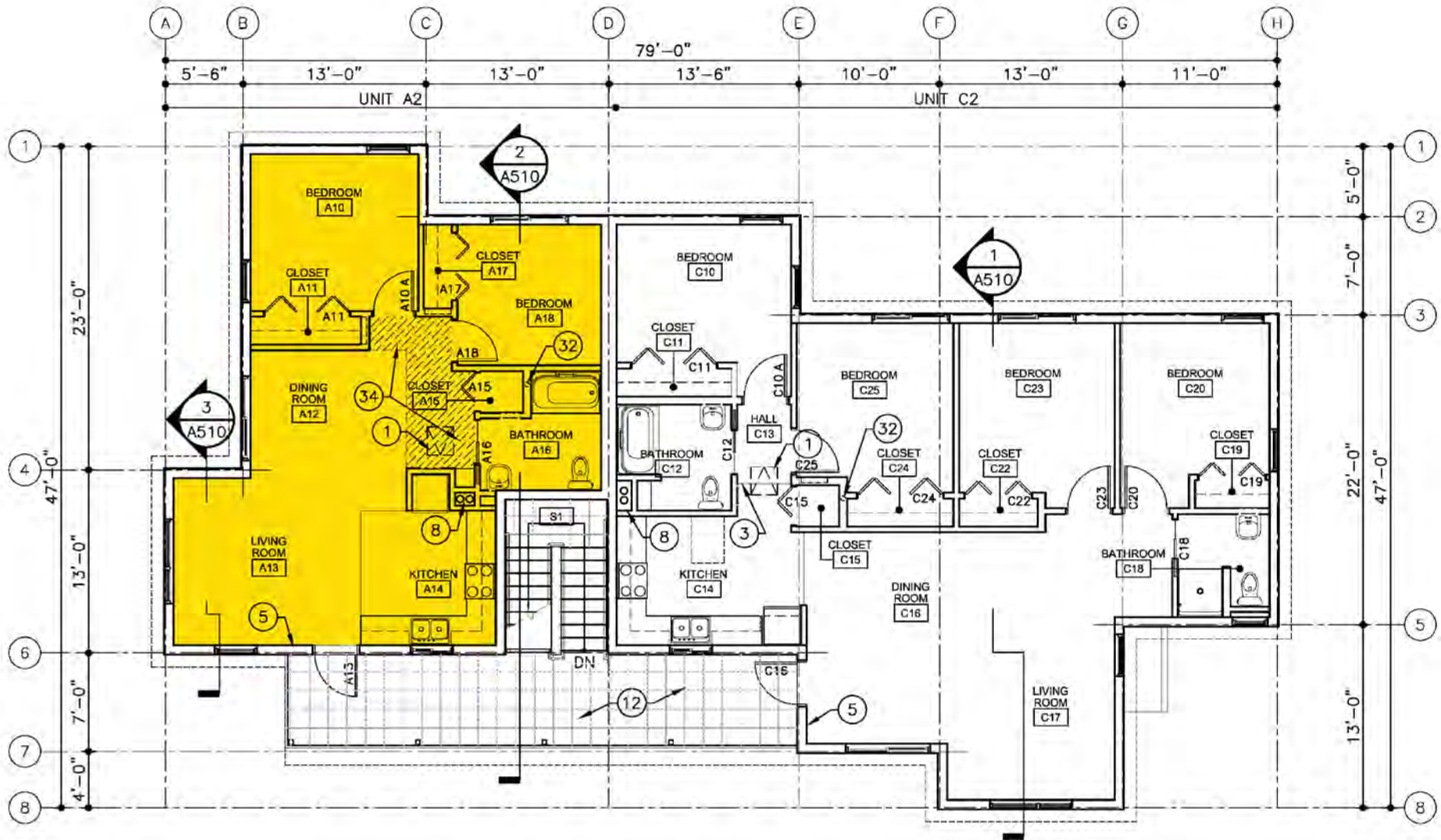
WEST ELEVATION (3)
1/8"=1'-0"



SOUTH ELEVATION (1)
1/8"=1'-0"



FIRST FLOOR PLAN 1
 1/8"=1'-0"



SECOND FLOOR PLAN 2
 1/8"=1'-0" -